



# Let's Get Organized!



Welcome Families!

# How are we feeling ?



1. Sadness



2. Anger



3. Disgust



4. Envy



5. Joy



6. Fear



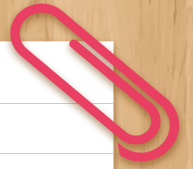
SIS



Schoolology



Google  
Drive



# Today's topics

Explorations of the  
applications used

**SIS, GDrive &  
Schoolology**

**01**

**RR Basics**

Bell Schedule, School  
Structures & Expectations

**02**

**03**

**Supporting  
Executive**

**Functioning Skills**

Setting up success at home

**01**

**RR Basics**

<b>Blue/Odd Days</b>		<b>Gold/Even Days</b>
<b>1st Period</b>	7:30 - 8:55	<b>2nd Period</b>
<b>3rd Period (Rock Time)</b>	9:00 - 10:25	<b>4th period</b>
<b>Recess</b>	10:25 - 10:45	<b>Recess</b>
	10:50 - 12:45	
<b>5th Period/Lunch</b>	<b>A Lunch</b> Lunch - 10:50 - 11:20 Class - 11:20 - 12:45  <b>B Lunch</b> Class - 10:50 - 11:35 Lunch - 11:35 - 12:05 Class - 12:05 - 12:45  <b>C Lunch</b> Class - 10:50 - 12:15 Lunch - 12:15 - 12:45	<b>6th Period/Lunch</b>
<b>7th Period</b>	12:50 - 2:15	<b>8th Period</b>

### Rocky Run Middle School Blue/Gold Calendar

**2024**  
-  
**2025**

  **Blue Day**

  **Gold**

**August 2024**

S	M	T	W	T	F	S
1	2	3	4	5	6	7
8	9	10	11	12	13	14
15	16	17	18	19	20	21
22	23	24	25	26	27	28
29	30	31				

28 Labor Day Break

**September 2024**

S	M	T	W	T	F	S
	1	2	3	4	5	6
7	8	9	10	11	12	13
14	15	16	17	18	19	20
21	22	23	24	25	26	27
28	29	30				

2 Labor Day Break

**October 2024**

S	M	T	W	T	F	S
		1	2	3	4	5
6	7	8	9	10	11	12
13	14	15	16	17	18	19
20	21	22	23	24	25	26
27	28	29	30	31		

3 Both Halloween Begins weekend 10/1 - weekend 10/5  
10 Van Halpe Begins weekend 10/11 - weekend 10/15  
13 Indigenous Peoples Day

**November 2024**

S	M	T	W	T	F	S
			1	2	3	4
5	6	7	8	9	10	11
12	13	14	15	16	17	18
19	20	21	22	23	24	25
26	27	28	29	30		

1 School  
5-6 All Saints Day / Day de les Mentes  
8 Election Day  
11 Election Day  
27-28 Thanksgiving Break

**December 2024**

S	M	T	W	T	F	S
						1
2	3	4	5	6	7	8
9	10	11	12	13	14	15
16	17	18	19	20	21	22
23	24	25	26	27	28	29
30	31					

6 School Day  
23 - January 1 Winter Break  
23 Christmas  
24 - January 2 Christmas Begins weekend 12/24 - weekend 1/1

**January 2025**

S	M	T	W	T	F	S
						1
2	3	4	5	6	7	8
9	10	11	12	13	14	15
16	17	18	19	20	21	22
23	24	25	26	27	28	29
30	31					

1 New Year's Day  
5 Three Kings Day/Epiphany  
7 Christmas  
18 Christmas Begins  
28 Martin Luther King Jr.'s Birthday  
28 Inauguration Day  
29 Lunar New Year

**February 2025**

S	M	T	W	T	F	S
						1
2	3	4	5	6	7	8
9	10	11	12	13	14	15
16	17	18	19	20	21	22
23	24	25	26	27	28	29
30						

17 Washington's Birthday and President's Day  
20 Valentine's Day  
23 Presidents Day  
24 Groundhog Day  
27 Super Bowl  
28 Groundhog Day  
29 Groundhog Day

**March 2025**


S	M	T	W	T	F	S
						1
2	3	4	5	6	7	8
9	10	11	12	13	14	15
16	17	18	19	20	21	22
23	24	25	26	27	28	29
30	31					

1 First Full Day of Semester Begins weekend 3/1 and 3/4  
10 Presidents Day  
14 Good Friday  
15 Easter  
18 Good Friday  
19 Easter  
22 Good Friday  
23 Good Friday  
24 Good Friday  
25 Good Friday  
26 Good Friday  
27 Good Friday  
28 Good Friday  
29 Good Friday  
30 Good Friday  
31 Good Friday

**April 2025**

S	M	T	W	T	F	S
						1
2	3	4	5	6	7	8
9	10	11	12	13	14	15
16	17	18	19	20	21	22
23	24	25	26	27	28	29
30						

1 Semester Begins weekend 4/1 - weekend 4/5  
15 Memorial Day  
15 Memorial Day  
16 Memorial Day  
17 Memorial Day  
18 Memorial Day  
19 Memorial Day  
20 Memorial Day  
21 Memorial Day  
22 Memorial Day  
23 Memorial Day  
24 Memorial Day  
25 Memorial Day  
26 Memorial Day  
27 Memorial Day  
28 Memorial Day  
29 Memorial Day  
30 Memorial Day  
31 Memorial Day



**Legend**

F First Day of School

ER 2 Hour Student Early Release

QE End of the Quarter

YE Last Day for Regular Classes/ Early Release

O Religious and Cultural Observances - Observing Only

TW Teacher Workday / Student Holiday

SD Staff Development Day / Student Holiday

SP School Planning Day / Student Holiday

H Student Holiday

**Quarter Duration**

Quarter	End Date	Duration
1	October 31	48
2	January 28	46
3	March 28	41
4	June 11	46

180 Instructional Days

Number of 5-Day Instructional Weeks

1st Quarter - 6

2nd Quarter - 6

3rd Quarter - 7

4th Quarter - 7

**Updated 7/24**

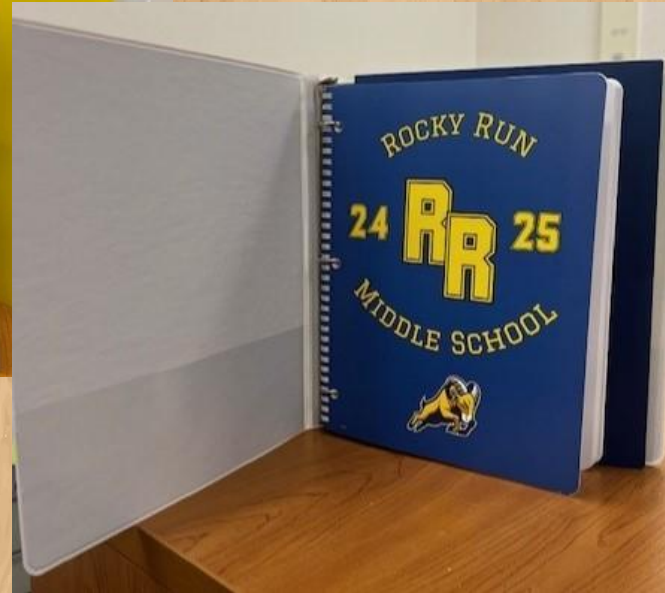
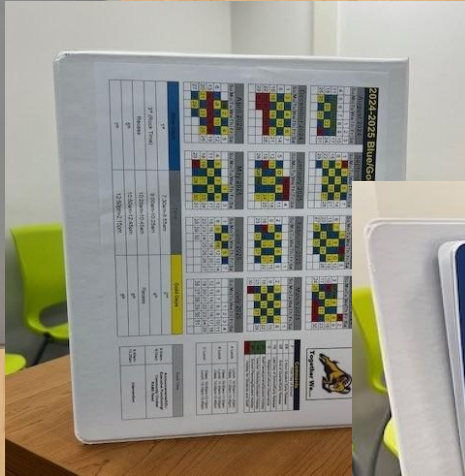
Rock Time Schedule	
9:00am-9:35am	Announcements/SEL/Executive Functioning/Community Circles/RAMS Read
9:35am-9:40am	Transition
9:40am-10:25am	Intervention/Enrichment/Office Hours/Work Time

# Ram Binder

Gr: 7

RT: Alderman

Team: Meteors



# Expectations

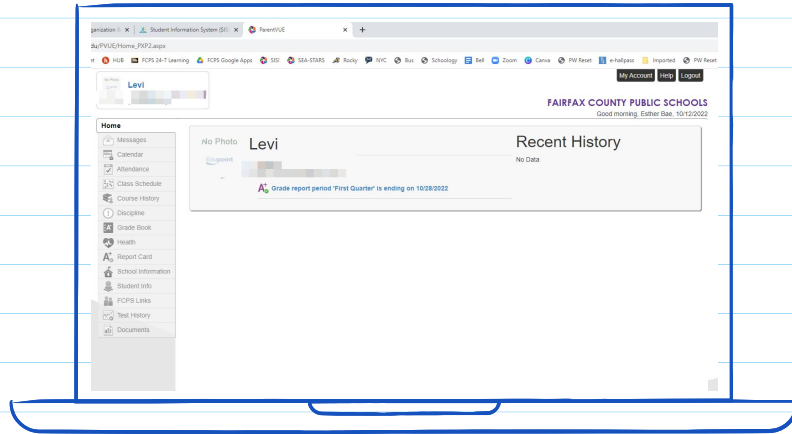
- Laptops are charged everyday
- Students are initiating conversations with teachers about late / missed / make-up work / retakes



**02**

# **SIS & Schoolology**

# Let's talk about SIS!



What are the best ways  
to use SIS when  
supporting your child?

# Deciphering SIS

Home

Messages

Calendar

Attendance

Class Schedule

Course History

**A** Grade Book

Health

A+ Report Card

Student Info

FCPS Links

Test History

Documents

## GRADE BOOK

Classes for Rocky Run Middle School

Qtr 2 ▾

### 1: Invest Env Sci HN

▾ 2nd Qtr

**C+**

78.4%

1 Missing Assignment



Last Update: 11/19/2020

▾ 1st Semester

**C+**

78.4%

0 Missing Assignments



Last Update: 11/30/2020

▾ 2nd Qtr Fnl Exm

**N/A**

0.0%

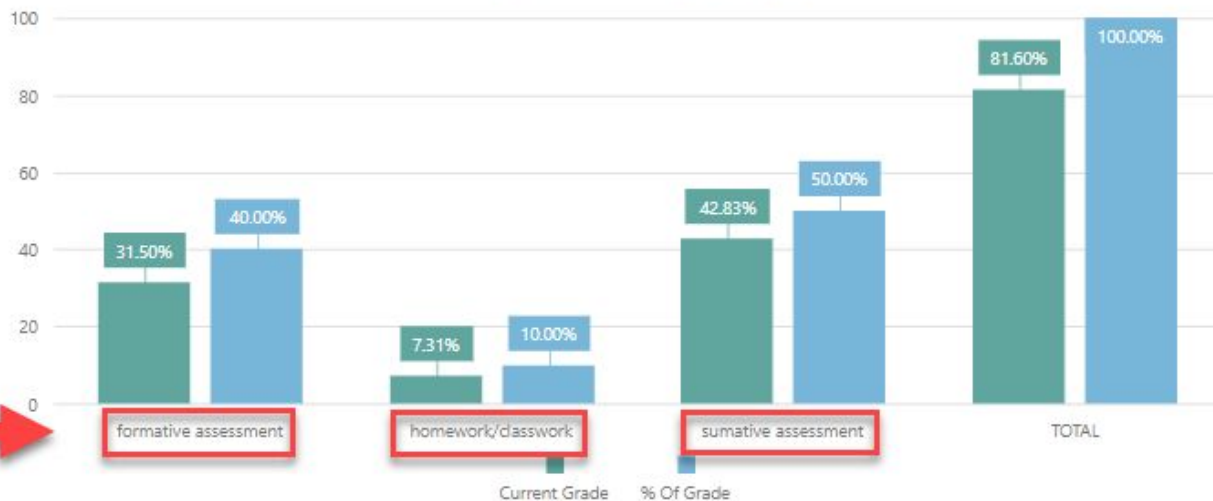
0 Missing Assignments

Last Update:

## Category Weighting

**B-**  
81.6%

6 Missing  
Assignments



### Assignments

Date	Assignment	Assignment Type	Resources	Score	Score Type	Points	Notes
12/01/2020	<a href="#">Inequalities Desmos</a>	homework/classwork	0	2 out of 4	Raw Score	2/4	Missing
11/24/2020	<a href="#">County Inventory Test</a>	homework/classwork	0	2 out of 4	Raw Score	2/4	Missing
11/19/2020	<a href="#">Unit 3 Test</a>	summative assessment	0	95 out of 100	Raw Score	95/100	
11/17/2020	<a href="#">Inequalities on number line Desmos</a>	homework/classwork	0	2 out of 4	Raw Score	2/4	Missing
11/12/2020	<a href="#">Equations Quiz</a>	formative assessment	0	10 out of 10	Raw Score	10/10	

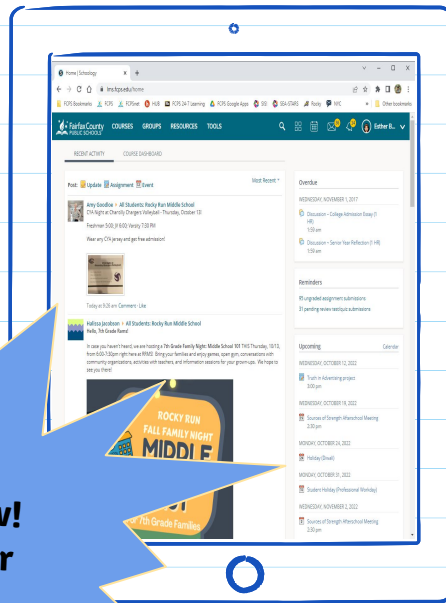


# Schoolology

“It’s in Schoolology.”

“WHERE in  
Schoolology?!”

**Tip! Switch to  
your child’s view!  
It is much easier  
to find  
information.**





# Schoolology



FCPS

Courses ▾

Groups ▾

Resources

Tools ▾



Esther Bae ▾

## Courses

My Courses



All Staff  
Rocky Run Middle School  
Rocky Run Middle School



All School  
Rocky Run Middle School  
Rocky Run Middle School



Division Training Course  
Rocky Run MS  
Rocky Run Middle School



Library  
Rocky Run Middle School  
Rocky Run Middle School



Personal Course  
Esther Bae  
Rocky Run Middle School



Rocky Run After-School Program  
2024-2025  
Rocky Run Middle School



Senior Seminar  
Example  
Schoolology Training



Student Services  
Rocky Run Middle School  
Rocky Run Middle School



# Schoolology

Period 8  
Mrs. Lovely  
RN ALGEBRA

You are not currently enrolled as an admin in this course. [Enro](#)

Algebra 1 HN: Lovely, K (08)

Rocky Run Middle School

FCPS Courses Groups Resources Tools

September 2023 - All Calendars

Month Week Day

Sun	Mon	Tue	Wed	Thu	Fri	Sat
27	28 Asynchronous August MTSS Professional Learning Series Posted for Participants - Establishing MTSS School Teams				1 Holidays   Labor Day Break	2
3 Holidays   Labor Day Break	4				8	9 My Name 11:59 pm My Name
10	11				14 Energy and Safety Summative Test Energy Transformations Lab Energy Transformations Lab 11:59 pm Energy Vocabulary 11:59 pm Energy Vocabulary 11:59 pm	16 Energy and Safety Summative Test 7:30 am Energy and Safety Summative Test 7:30 am Energy and Safety Summative Test 7:30 am Energy Transformations Lab 11:59 pm Energy Transformations Lab 11:59 pm Energy Transformations Lab 11:59 pm Asynchronous August MTSS Professional Learning Series COMPLETED by participants
17	18	19	20 Virtual MTSS Professional Learning Series Wednesday Session: Using Data Sources to Inform MTSS Systems 1:30 pm	21 Virtual MTSS Professional Learning Series Thursday Session: Using Data Sources to Inform MTSS Systems 9:30 am	22	23

Calendar details for Tuesday, September 12, 2023:

- Me
- Rocky-Run After-School P... Rocky Run Middle School
- All Staff: Rocky Run Midd... Rocky Run Middle School
- Personal Course: Esther ... Rocky Run Middle School
- English 8 HN: Bae, E (02) Rocky Run Middle School
- Library: Rocky Run Middle... Rocky Run Middle School
- Student Services: Rocky ... Rocky Run Middle School
- All Students: Rocky Run ... Rocky Run Middle School
- All School: Rocky Run Mi... Rocky Run Middle School
- Team Designator 8th Gr... Rocky Run Middle School

Color selection palette:

- Light Blue
- Light Green
- Light Purple
- Light Yellow
- Light Orange
- Light Cyan
- Light Pink
- Light Blue-Gray
- Light Green-Gray
- Light Purple-Gray
- Light Yellow-Gray
- Light Orange-Gray
- Light Cyan-Gray
- Light Pink-Gray
- Light Blue
- Light Green
- Light Purple
- Light Yellow
- Light Orange
- Light Cyan
- Light Pink
- Light Blue-Gray
- Light Green-Gray
- Light Purple-Gray
- Light Yellow-Gray
- Light Orange-Gray
- Light Cyan-Gray
- Light Pink-Gray

# Varsity Tutoring

- 24/7 On-Demand Chat Tutoring
- Live Group Classes
- Essay Review
- College and Career Readiness
- Assessment and Self-Study



**Academic Support**

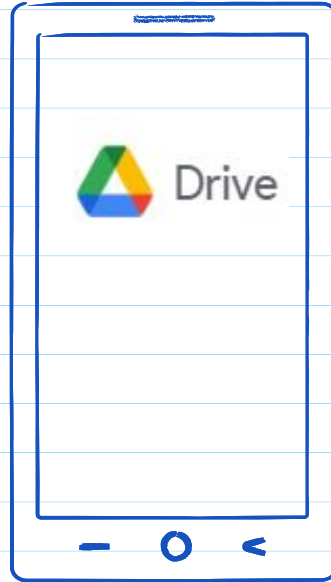
**Launchpad** 

Fairfax County Public Schools is partnering with Varsity Tutors for Schools! All students now have access to the Varsity Tutors learning resources like chat tutoring (great for homework help), live group classes, essay review (helps you improve your writing before submitting the essay to your teacher), extracurricular classes, StarCourses taught by celebrities, and more!





# Google Drive



Much of the work  
completed in classes  
and for homework will  
be through Google  
Drive.

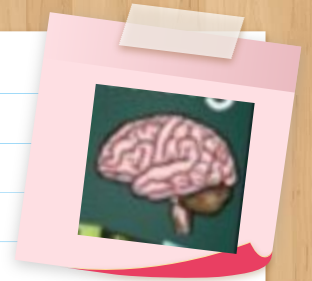
# Useful Tips for Google Drive

- Use & Check EMAIL
- If students say they don't know their teachers' email address, they can also 'message' through Schoology
- Google KEEP - great for creating lists and crossing off completed items
- Google TASK - schedule reminders for certain tasks
- Google CALENDAR

**03**

**Executive  
Functioning  
Skills & How  
to teach  
them at  
home**

# Executive Functioning Skills



Planning



Organization



Task Initiation



Flexibility



Attention



Self-Control



Metacognition



Working Memory



Time Management



Perseverance

# How You Can Help at Home



## To Do List

- 1.
- 2.
- 3.
- 4.
- 5.



## After School Routine

- Walk Dog
- Homework
- Put everything in backpack
- Charge computer

# INCENTIVES



# Optimistic Closure

Thinking about what you heard and learned today, what is one takeaway you want to try, and why?

A takeaway can be an idea, a strategy, a tool, or an action step.



**Thank you!**