




Let's Get Organized!



Welcome 7th grade
parents!

Welcome Families!





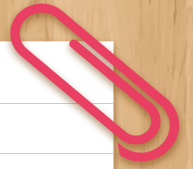
SIS



Schoolology



Google
Drive



Today's topics

In-depth explorations of
the applications used

**SIS, GDrive &
Schoolology**

01

RR Basics

Bell Schedule, School
Structures & Expectations

02

03

**Supporting
Executive**

Functioning Skills

Setting up success at home

01

RR Basics

Regular Bell Schedule

Blue/Odd Days		Gold/Even Days
1st Period	7:30 - 8:55	2nd Period
3rd Period (Rock Time)	9:00 - 10:25	4th period
Recess	10:25 - 10:45	Recess
5th Period/Lunch	10:50 - 12:45 A Lunch Lunch - 10:50 - 11:20 Class - 11:20 - 12:45 B Lunch Class - 10:50 - 11:35 Lunch - 11:35 - 12:05 Class - 12:05 - 12:45 C Lunch Class - 10:50 - 12:15 Lunch - 12:15 - 12:45	6th Period/Lunch
7th Period	12:50 - 2:15	8th Period

2023-2024 Blue/Gold School Calendar

August 2023	September 2023	October 2023	November 2023
Su M Tu W Th Fr Sa 1 2 3 4 5 6 7 8 9 10 11 12 13 14 15 16 17 18 19 20 21 22 23 24 25 26 27 28 29 30 31	Su M Tu W Th Fr Sa 1 2 3 4 5 6 7 8 9 10 11 12 13 14 15 16 17 18 19 20 21 22 23 24 25 26 27 28 29 30	Su M Tu W Th Fr Sa 1 2 3 4 5 6 7 8 9 10 11 12 13 14 15 16 17 18 19 20 21 22 23 24 25 26 27 28 29 30 31	Su M Tu W Th Fr Sa 1 2 3 4 5 6 7 8 9 10 11 12 13 14 15 16 17 18 19 20 21 22 23 24 25 26 27 28 29 30
December 2023	January 2024	February 2024	March 2024
Su M Tu W Th Fr Sa 1 2 3 4 5 6 7 8 9 10 11 12 13 14 15 16 17 18 19 20 21 22 23 24 25 26 27 28 29 30 31	Su M Tu W Th Fr Sa 1 2 3 4 5 6 7 8 9 10 11 12 13 14 15 16 17 18 19 20 21 22 23 24 25 26 27 28 29 30 31	Su M Tu W Th Fr Sa 1 2 3 4 5 6 7 8 9 10 11 12 13 14 15 16 17 18 19 20 21 22 23 24 25 26 27 28 29	Su M Tu W Th Fr Sa 1 2 3 4 5 6 7 8 9 10 11 12 13 14 15 16 17 18 19 20 21 22 23 24 25 26 27 28 29 30 31
April 2024	May 2024	June 2024	July 2024
Su M Tu W Th Fr Sa 1 2 3 4 5 6 7 8 9 10 11 12 13 14 15 16 17 18 19 20 21 22 23 24 25 26 27 28 29 30	Su M Tu W Th Fr Sa 1 2 3 4 5 6 7 8 9 10 11 12 13 14 15 16 17 18 19 20 21 22 23 24 25 26 27 28 29 30 31	Su M Tu W Th Fr Sa 1 2 3 4 5 6 7 8 9 10 11 12 13 14 15 16 17 18 19 20 21 22 23 24 25 26 27 28 29 30	Su M Tu W Th Fr Sa 1 2 3 4 5 6 7 8 9 10 11 12 13 14 15 16 17 18 19 20 21 22 23 24 25 26 27 28 29 30 31
Blue Days	Time	Gold Days	
1 st	7:30am-8:55am	2 nd	
3 rd (Rock Time)	9:00am-10:25am	4 th	
Recess	10:25am-10:45am	Recess	
5 th	10:50am-12:45pm	6 th	
7 th	12:50pm-2:15pm	8 th	



Comments	
F	First Day of School
ER	2 Hour Student Early Release
QE	End of Quarter/Early Release
YE	Last Day of School/Early Release
O	Religious/Cultural Observance
SD	Staff Development/Student Holiday
TW	Teacher Workday/Student Holiday
SP	School Planning/Student Holiday
H	Holiday for Students and Staff

A Lunch	Lunch: 10:50am-11:20am Class: 11:20am-12:45pm
B Lunch	Class: 10:50am-11:35am Lunch: 11:35am-12:05pm Class: 12:05pm-12:45pm
C Lunch	Class: 10:50am-12:15pm Lunch: 12:15pm-12:45pm

Rock Time	
9:00am-9:40am	SEL/Advisory/RAMS Read
9:43am-10:25am	Intervention

Rock Time	
9:00am-9:40am	SEL/Advisory/RAMS Read
9:43am-10:25am	Intervention

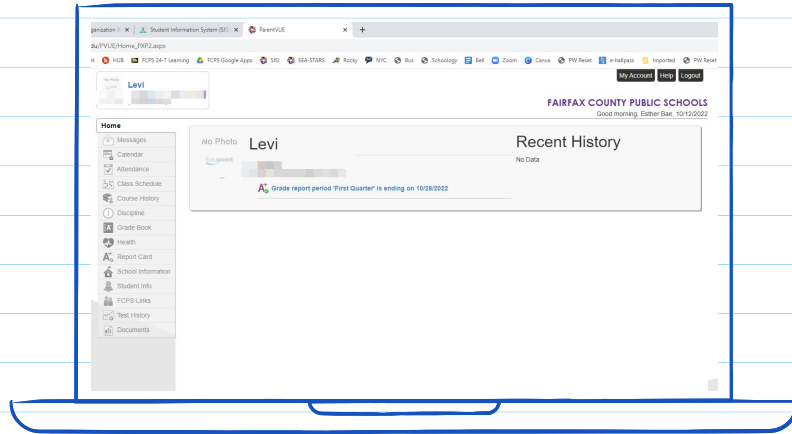
Expectations

- Laptops are charged everyday
- Students are initiating conversations with teachers about late / missed / make-up work / retakes

02

SIS & Schoolology

Let's talk about SIS!



What are the best ways
to use SIS when
supporting your child?

Deciphering SIS

Home

Messages

Calendar

Attendance

Class Schedule

Course History

A Grade Book

Health

A+ Report Card

Student Info

FCPS Links

Test History

Documents

GRADE BOOK

Classes for Rocky Run Middle School

Qtr 2 ▾

1: Invest Env Sci HN

▾ 2nd Qtr

C+

78.4%

1 Missing Assignment



Last Update: 11/19/2020

▾ 1st Semester

C+

78.4%

0 Missing Assignments



Last Update: 11/30/2020

▾ 2nd Qtr Fnl Exm

N/A

0.0%

0 Missing Assignments

Last Update:

Category Weighting

B-
81.6%

6 Missing
Assignments



Assignments

Date	Assignment	Assignment Type	Resources	Score	Score Type	Points	Notes
12/01/2020	Inequalities Desmos	homework/classwork	0	2 out of 4	Raw Score	2/4	Missing
11/24/2020	County Inventory Test	homework/classwork	0	2 out of 4	Raw Score	2/4	Missing
11/19/2020	Unit 3 Test	summative assessment	0	95 out of 100	Raw Score	95/100	
11/17/2020	Inequalities on number line Desmos	homework/classwork	0	2 out of 4	Raw Score	2/4	Missing
11/12/2020	Equations Quiz	formative assessment	0	10 out of 10	Raw Score	10/10	



Schoolology

 <p>Rocky Run After-School Program After-School Rocky Run Middle School</p>	 <p>All School Rocky Run Middle School Rocky Run Middle School</p>	 <p>All Students Rocky Run Middle School Rocky Run Middle School</p>	 <p>1st Period Ms. Pryde-Haskins October 7 Room: 105</p> <p>Invest in Env Sci Pryde-Haskins, (01) Rocky Run Middle School</p>
 <p>Learning Seminar 7 Ryan, L (03) Rocky Run Middle School</p>	 <p>Family & Consumer Sci 2 Tees, K (05:51) Rocky Run Middle School</p>	 <p>7th Period Mrs. Lovely & Mr. Sages Math 7 Room 114</p> <p>Mathematics 7 Lovely, K (07) Rocky Run Middle School</p>	 <p>2nd Period Mrs. Meghan Pafumi Creative Writing Room: 115</p> <p>Creative Writing Pafumi, M (02:51) Rocky Run Middle School</p>
 <p>MRS. ALDERMAN'S HPE 7 2023 4TH PERIOD We got this!</p> <p>Health & PE 7 Alderman, M (04:51) Rocky Run Middle School</p>	 <p>8th Period Eng HN Mrs. Bartling Room 302</p> <p>English 7 HN Bartling, J (08) Rocky Run Middle School</p>	 <p>6th Period</p> <p>US History 7 HN Ryan, L (06) Rocky Run Middle School</p>	 <p>Rocky Run Library</p> <p>Library Rocky Run Middle School Rocky Run Middle School</p>

Schoology

The screenshot displays the Schoology interface for a course titled "Mathematics 7: Lovely, K (07)" at Rocky Run Middle School. The page features a navigation menu on the left with options like Materials, Updates, Grades, Mastery, Members, Lucidchart, Tutor.com, and Zoom. The main content area includes a course announcement, a central graphic for "Mrs. Lovely & Ms. Sayers's MATH 7" with icons for Desmos activity, Desmos Calculator, Mrs. Lovely's Classroom work list, Mathspace, Calendar, and Formative, and a list of units such as "Unit 2 Expressions, Equations & Inequalities" and "Unit 1".

FCPS Courses Groups Resources Grades

Mathematics 7: Lovely, K (07)
Rocky Run Middle School

Announcement

7th Period
Mrs. Lovely & Ms. Sayers
Math 7
Mrs. Sayers

Materials

- Updates
- Grades
- Mastery
- Members
- Lucidchart
- Tutor.com
- Zoom

Information

Grading periods
2023-2024YR, 2023-2024Q1,
2023-2024Q2, 2023-2024Q3,
2023-2024Q4

Mrs. Lovely & Ms. Sayers's
MATH 7

- Desmos activity
- Desmos Calculator
- Mrs. Lovely's Classroom work list
- Mathspace
- Calendar
- Formative

Unit 2 Expressions, Equations & Inequalities

Unit 1
Available after 8/21/23 12:00am

Upcoming -
No upcoming assignments or events

Schoology (Cont'd)

The screenshot displays the Schoology calendar interface for September 2023. The top navigation bar includes the FCPS logo, navigation menus for Courses, Groups, Resources, and Tools, and utility icons for search, grid view, calendar view, messages (4), and notifications (50). The main calendar area shows a monthly view for September 2023, with tabs for Today, Month, Week, and Day. A list of events is visible on the left side of the calendar, including:

- Me
- Rocky-Run After-School P... (Rocky Run Middle School)
- All Staff: Rocky Run Midd... (Rocky Run Middle School)
- Personal Course: Esther ... (Rocky Run Middle School)
- English 8 HN: Bae, E (02) (Rocky Run Middle School)
- Library: Rocky Run Middle... (Rocky Run Middle School)
- Student Services: Rocky ... (Rocky Run Middle School)
- All Students: Rocky Run ... (Rocky Run Middle School)
- All School: Rocky Run Mi... (Rocky Run Middle School)
- Team Designator 8th Gr... (Rocky Run Middle School)

The calendar grid shows the following events:

- September 28: Asynchronous August MTS Professional Learning Series Posted for Participants - Establishing MTSS School Teams
- September 3-4: Holidays | Labor Day Break
- September 14: Energy and Safety Summative Test, Energy Transformations Lab, Energy Vocabulary 11:59 pm
- September 15: Energy and Safety Summative Test 7:30 am, Energy and Safety Summative Test 7:30 am, Energy and Safety Summative Test 7:30 am, Energy Transformations Lab 11:59 pm, Energy Transformations Lab 11:59 pm, Energy Transformations Lab 11:59 pm
- September 22: Asynchronous August MTSS Professional Learning Series COMPLETED by participants
- September 20-21: Virtual MTSS Professional Learning Series Wednesday Session: Using Data Sources to Inform MTSS Systems 1:30 pm, Virtual MTSS Professional Learning Series Thursday Session: Using Data Sources to Inform MTSS Systems 9:30 am

A color selection palette is open in the center of the calendar, showing various color options for event customization.

Tutor.com

County SCHOOLS COURSES GROUPS RESOURCES TOOLS

Search, Grid, Calendar, Mail, Back, Profile, Estimate

Materials

- Updates
- Grades
- Mastery
- Members
- Lucidchart
- Tutor.com**
- Zoom

Information


Grading periods
2022-2023YR, 2022-2023Q1,
2022-2023Q2, 2022-2023Q3,
2022-2023Q4

This is how your course looks to Shalom Abebe
Use this tool to see how your course appears to each member. You can always change the visibility of your course materials by adjusting the availability options for each item.
Enter a member's name [Back to Course](#)

Invest Matt/Ener AA: Mathers, H (03)

Rocky Run Middle School

Announcement:



Period 3
Science 8 AA

Contact Me Syllabus Calendar Textbook FAQ

Mr. H Mathers

Course Information All Materials

Quarter 1 August 22 - October 28, 2022

Energy, Forces and Their Effects

Upcoming - 12

No upcoming assignments or events



Connect
with a tutor now

Schedule
a tutoring session

Submit
a paper for review

Take
a practice quiz

Other Tools ▾

Hi Esther!

What do you need help with today?

English ▾

Please take a moment to review our [honor code](#).

Topic

Elementary (Grades K-6) ▾

Subject

Select a subject... ▾

Grade

Select a grade... ▾

How would you like to work with your tutor?

Chat Only Chat + Voice

Enter your question

Type your question here.

[Attach a File](#)

CONNECT NOW

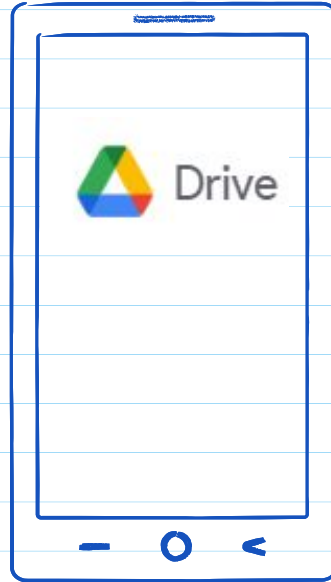
Welcome!

If you're looking to connect with a tutor, follow these steps:

1. Select your language, subject area, and grade level.
2. Choose how you would like to communicate with your tutor (by text or voice-chat).
3. Write your question or a concept you'd like to discuss.
4. Click the **CONNECT NOW** button.
5. After a brief wait, your 1-to-1 tutoring session will begin.

Have questions? Need technical support? [Contact technical support through this form.](#)

Google Drive



Much of the work
completed in classes
and for homework will
be through Google
Drive.

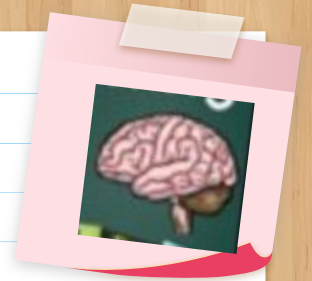
Useful Tips for Google Drive

- Use & Check EMAIL
- If students say they don't know their teachers' email address, they can also 'message' through Schoology
- Google KEEP - great for creating lists and crossing off completed items
- Google TASK - schedule reminders for certain tasks
- Google CALENDAR

03

**Executive
Functioning
Skills & How
to teach
them at
home**

Executive Functioning Skills



Planning



Organization



Task Initiation



Flexibility



Attention



Self-Control



Metacognition



Working Memory



Time Management



Perseverance

How You Can Help at Home



To Do List

- 1.
- 2.
- 3.
- 4.
- 5.



- After School Routine
- Walk Dog
 - Homework
 - Put everything in backpack
 - Charge computer

INCENTIVES



A spiral-bound notepad is positioned on a light-colored wooden surface. A yellow pushpin is pinned to the top edge of the notepad. The notepad is white with a spiral binding on the left side. The text "Think, Pair, Share." is written in a bold, blue, sans-serif font on the notepad.

**Think,
Pair,
Share.**

Optimistic Closure

Thinking about what you heard and learned today, what is one takeaway you want to try, and why?

A takeaway can be an idea, a strategy, a tool, or an action step.



Thank you!